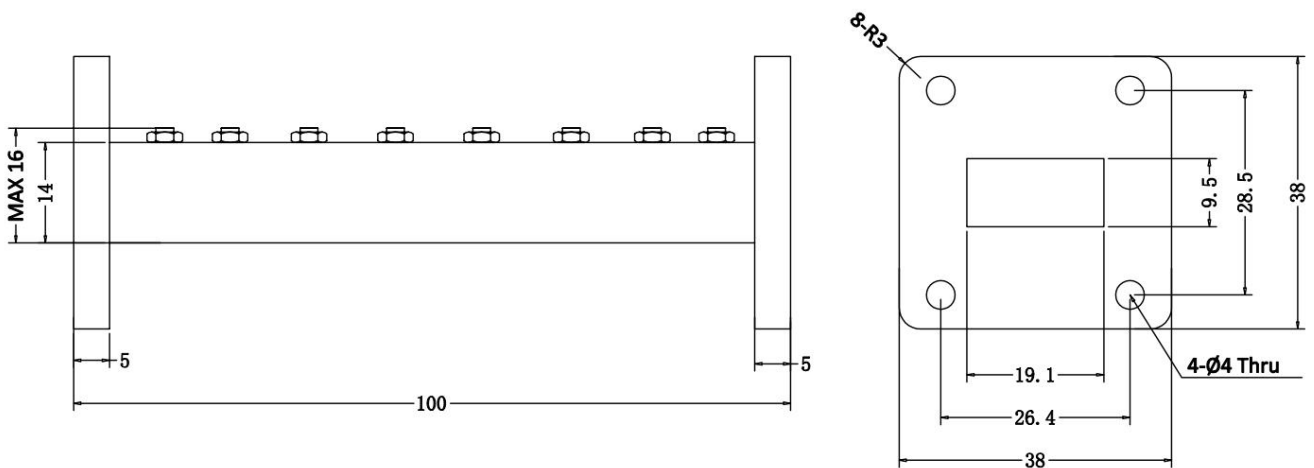


Waveguide Band-pass Filter

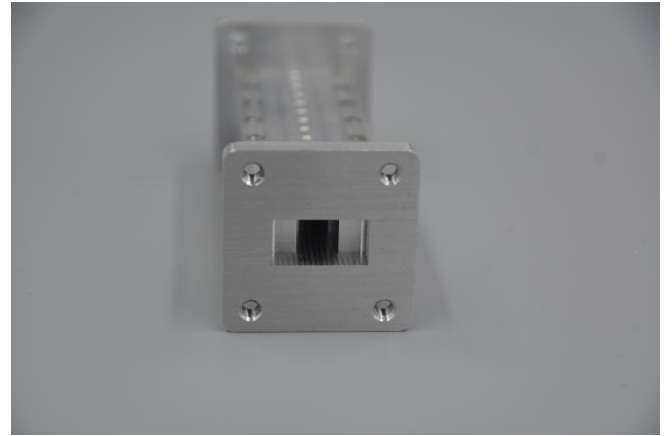
13700~14500 MHz

Physical Dimensions ($\pm 0.3\text{mm}$)



RF Parameter	
Frequency range (MHz)	13700~14550
RF connectors	BJ120
Insertion loss (dB)	≤ 0.3
Pass Band Ripple	$\leq \pm 0.1$ dB
Rejection	$\geq 50\text{dBc}@1450\sim 13700\text{Mhz}$
	$\geq 50\text{dBc}@15200\sim 20000\text{Mhz}$
VSWR	≤ 1.3
Impedance	50 Ω
Power Handling(W)	200
Surface Finish	Silver Plated

Environmental	
Operating Temperature	-40~+75 °C
Storage Temperature	-50~+85 °C



Telecommunication



Satellite Teleport



Military/Security



Radar



<https://raytheosmicrowave.com/>
WhatsApp: +86 159 8204 8087
Email: info1@raytheosmicrowave.com